
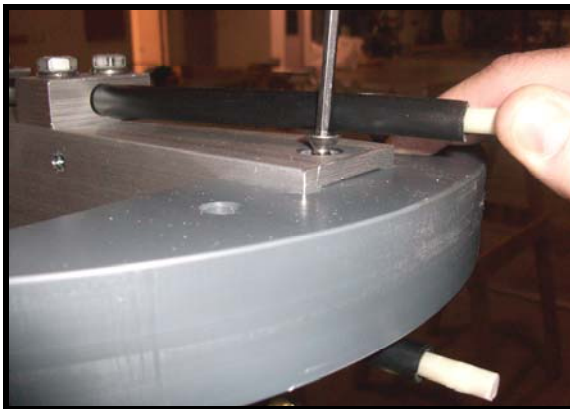




AXIS UPPER AND LOWER SENSOR UPGRADE KIT MANUAL

Installation Procedure:

-  Upon receiving your MCWW equipment, open all boxes and crates and verify that you have all the required components and there is no damage to the equipment. Verify that you have all your installation materials.
- Put the Axis arch in manual mode and push “down” button to lower manifold to a good working level. Turn OFF the MAIN AXIS ARCH CONTROL PANEL SWITCH.
- Pull H.P. manifold upper bullet guide out of track on driver’s side.
- Use a 5/32” hex wrench to remove white bullet guide first. Then the flat head bolt from the grey pvc guide. (as in picture #1)
- Then remove the old guide and replace it with the new guide. (as in picture #2)
- Replace white bullet guide back onto rods and tighten set screws.



Pic #1: Flex rod to side to get to bolt.



Pic #2: Make sure epoxy is up.

- Remove the existing upper limit sonar and mount and replace with new mount and sensor as in picture #3 or #4.



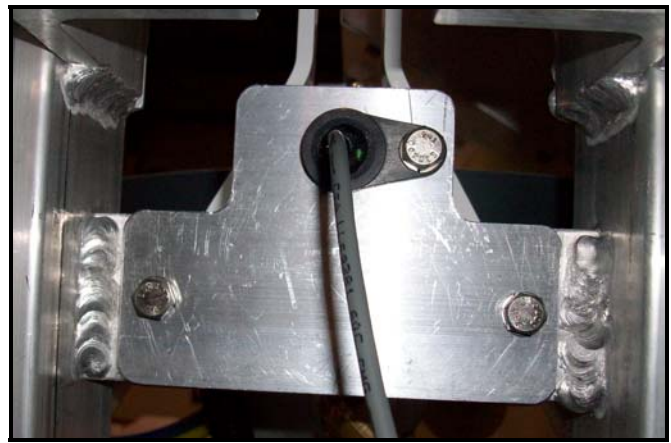
**NOTE: YOUR AXIS ARCH HAS EITHER AN “OLD”
MODEL LEG OR A NEWER MODEL:**

**THE THREE PIECE MOUNT IS FOR THE “OLD” MODEL LEG
AS SHOWN IN PICTURE # 3**

**THE SINGLE PIECE MOUNT IS FOR THE NEWER LEG
AS SHOWN IN PICTURE #4**



PIC #3: OLD LEG MOUNT



PIC #4: NEWER LEG MOUNT

- Bottom sonar needs to be removed. **DO NOT MOUNT NEW BRACKET TO SAME WELDMENT.** Use the set of WELDMENTS above for the new mount.
- If the leg is an "OLD" model, use the existing blocks and fasten the three piece mount with 1/4"-1/2" long bolts as shown below.



NEW WELDMENTS TO BE USED.
MAKE SURE MOUNT IS BELOW
WELDMENTS.

USE 1/4"- 20 X 1/2" LONG BOLTS

THREE PIECE MOUNT

NEW SENSOR

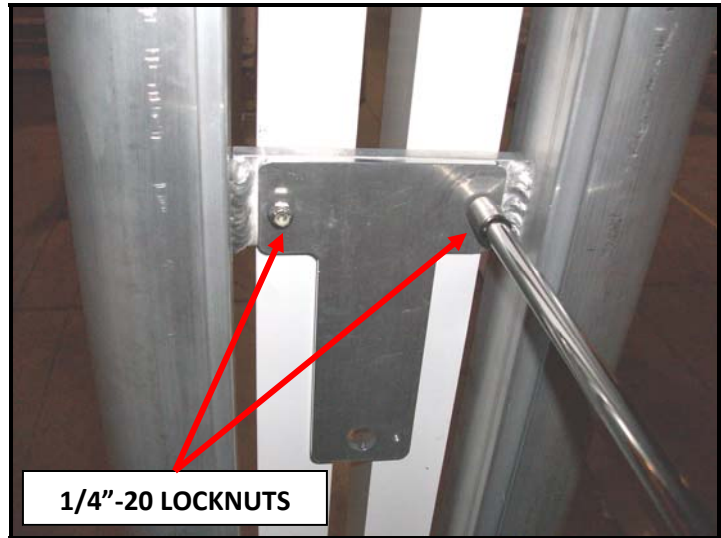
OLD WELDMENTS

PIC #5: NEW SENSOR MOUNT ON "OLD" LEG

- If the leg is a NEWER model, remove the fasteners holding the rails on the opposite side of the leg and replace with a 1/4"- 20 x 1-1/2" long bolts. (see PIC #6). The bolts should be long enough to go through the weldment and "STICK OUT ABOUT 1/2" ON THE OTHER SIDE. Secure the sensor mount with two 1/4"-20 Nylon lock nuts as shown in PICTURE #7 below. Secure the sensor on the mount (see PICTURE #8).



PIC #6: REPLACE EXISTING BOLTS

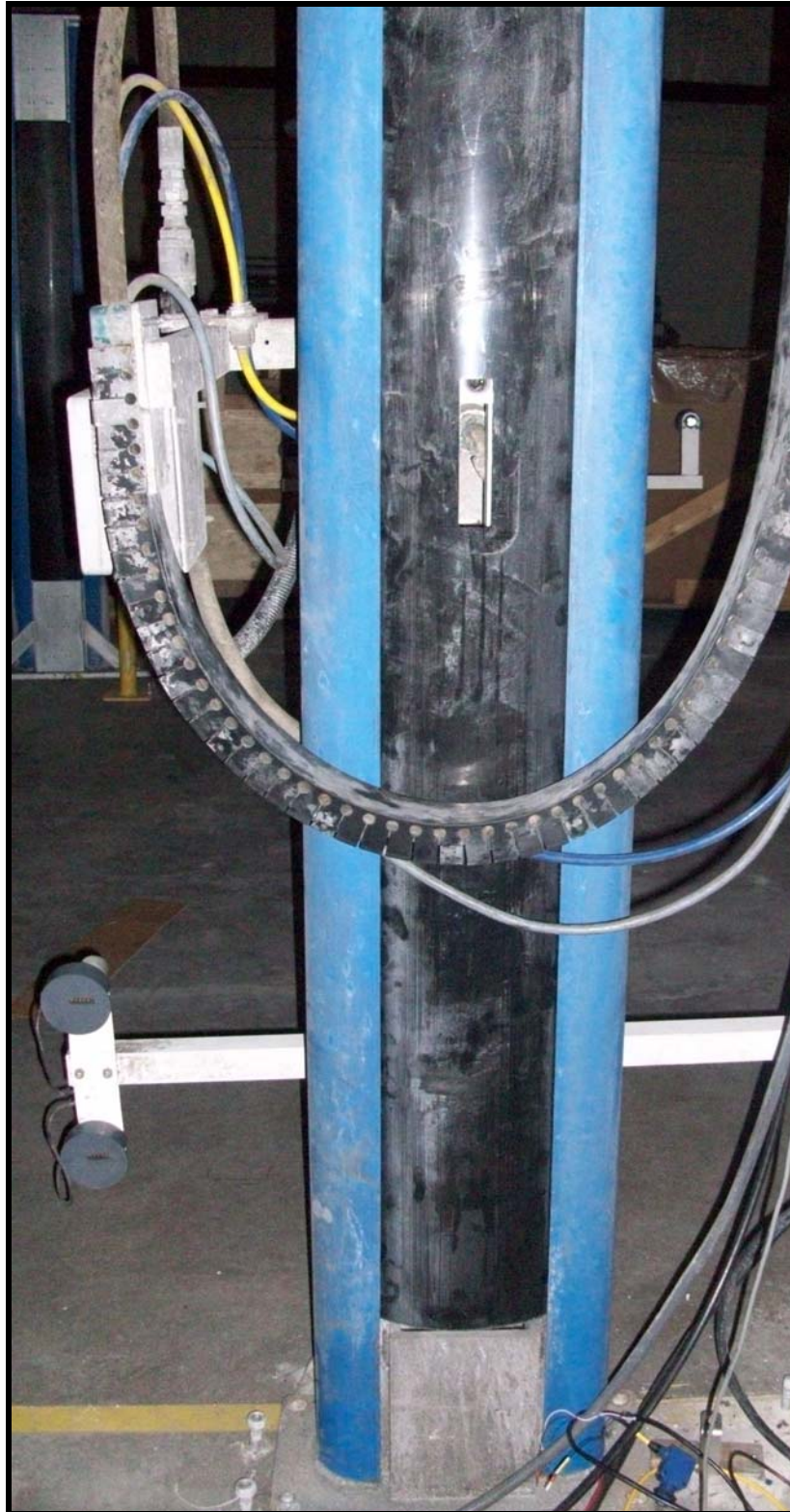


PIC #7: SECURE MOUNT WITH LOCK NUTS



PIC #8: NEW SENSOR

- Reinstall the accent covers. You may use the bottom one as is (see PICTURE #9) or “flip” it upside down and make a view hole in front of the new sensor if you want to see the sensor.



PIC #9: ACCENT COVER

