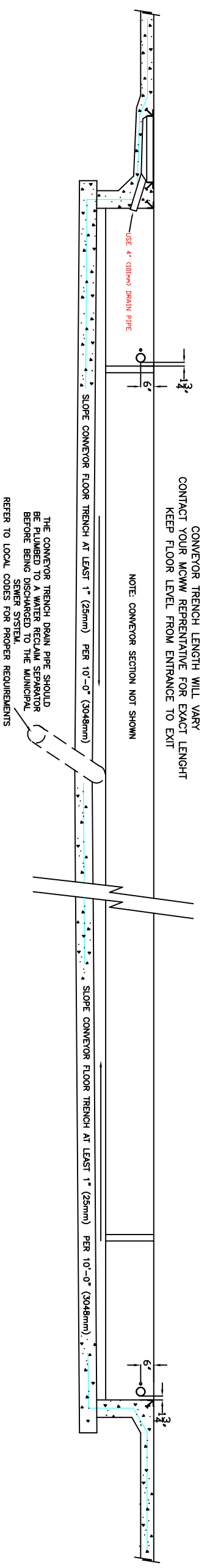


CONVEYOR TRENCH FLOOR PLAN
SCALE: NTS

- RECOMMENDED CONVEYOR TRENCH CONSTRUCTION PROCEDURES**
1. POUR TRENCH FOOTINGS PER LOCAL CODE.
 2. POUR CONVEYOR FLOOR TRENCH PER LOCAL CODE.
 3. POUR WALLS.
 4. POUR FINISHED FLOOR IN CAR WASH BAY.
 5. POUR CONVEYOR SHELF LAST.



SECTION: CONVEYOR TRENCH
SCALE: NTS

CONVEYOR TRENCH LENGTH WILL VARY
CONTACT YOUR MCWW REPRESENTATIVE FOR EXACT LENGTH
KEEP FLOOR LEVEL FROM ENTRANCE TO EXIT

NOTE: CONVEYOR SECTION NOT SHOWN

THE CONVEYOR TRENCH DRAIN PIPE SHOULD
BE PLUMBED TO A WATER RECLAIM SEPARATOR
BEFORE BEING DISCHARGED TO THE MUNICIPAL
SEWER SYSTEM.
REFER TO LOCAL CODES FOR PROPER REQUIREMENTS

CONVEYOR TRENCH LENGTH = CONVEYOR LENGTH + 1'-0" (300 mm)

NOTES: CONVEYOR LENGTH HAS TO BE IN MULTIPLES OF
5 FEET. EXAMPLE: 65' OR 70' OR 75' AND UP



VEHICLE WASHING
EQUIPMENT

48285 Frank
Wixom, MI 48393
www.motorcitywashworks.com

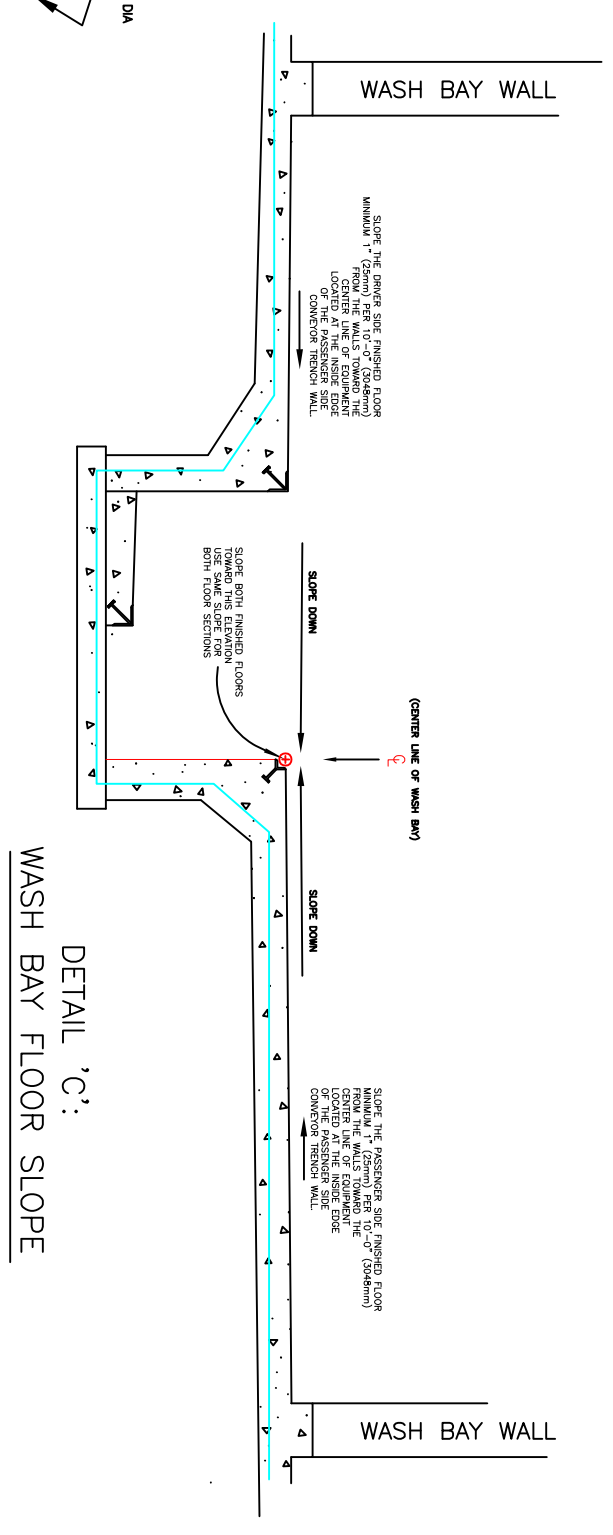
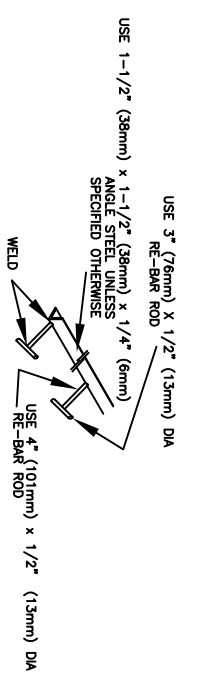
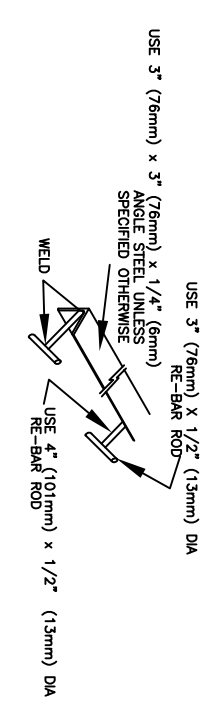
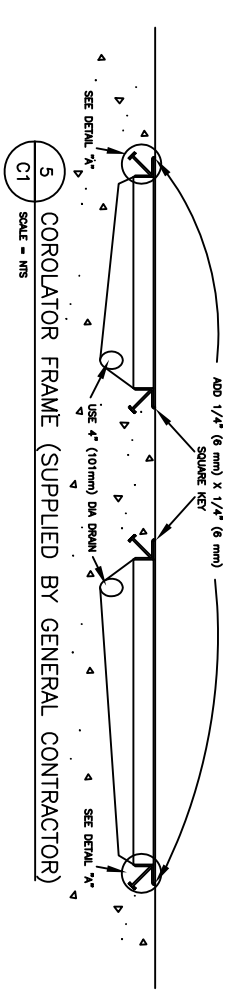
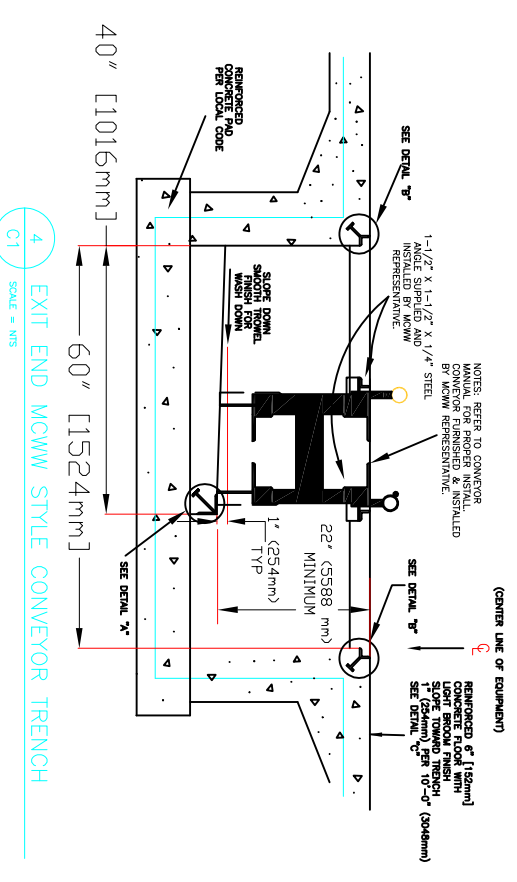
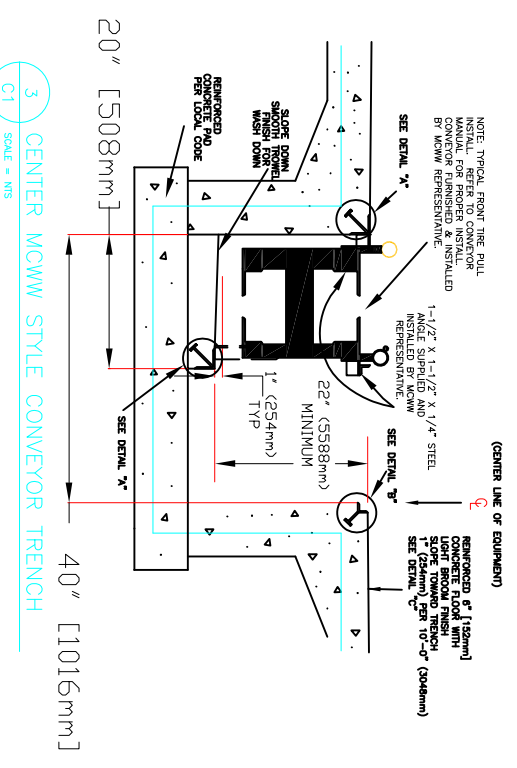
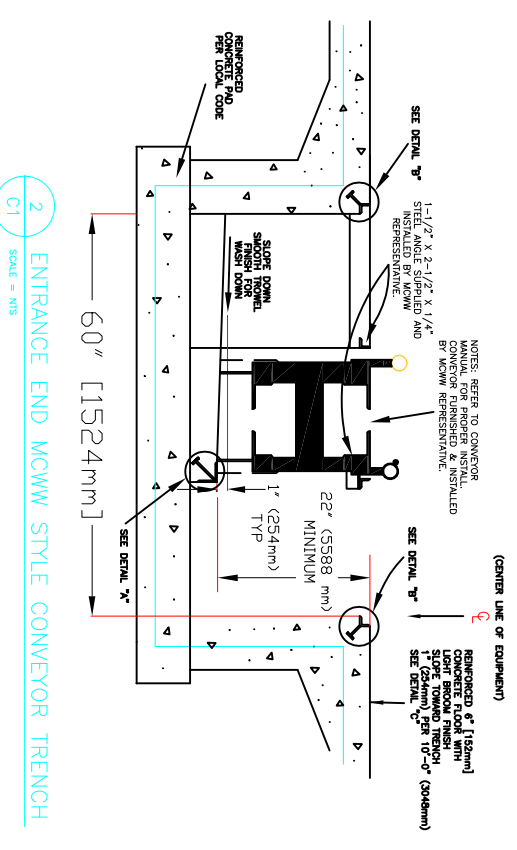
LVL	DATE	ENGR.	DESCRIPTION
Revisions			

DRAWN: MML	DATE: 12/03/09
SCALE: AS SHOWN	PAPER: 17" X 11"

HARD COPY IS INTENDED TO
BE ANSI B WHEN PRINTED
SCALE(S) ARE NOT ACURATE
FOR ANY OTHER SIZE

MCWW CONVEYOR
CV TRENCH DETAILS 1

SHEET-
DWG:
C-1



VEHICLE WASHING
EQUIPMENT

48285 Frank
Wixom, MI 48393
www.motorcitywashworks.com

LVL	DATE	ENGR.	DESCRIPTION
Revisions			

DRAWN: MML	DATE: 03/10/09
SCALE: AS SHOWN	PAPER: 17" X 11"

HARD COPY IS INTENDED TO BE ANSIB WHEN PRINTED SCALE(S) ARE NOT ACURATE FOR ANY OTHER SIZE

MCWW CONVEYOR
CV TRENCH DETAILS 2

SHEET-
DWG:
C-2